

THE MYMATHLAB GRAPHING TOOL

Some exercises in the Homework or Study Plan require the use of a graphing tool to enter graphical answers. Using this tool, students can plot points, lines, absolute value functions, parabolas, circles, 3-point quadratic functions, 4-point cubic functions, and transformation graphs (including sine, cosine, exponential, and logarithmic functions).

The screenshot below shows you how the graphing tool is integrated into a question. Students can enter the graph directly on the grid on the right of the window, or click the button with the magnifying glass (in the exercise area or at the top right of the graph) to open the graph window which can be enlarged to allow a better view of the graph. Students use the tool palette below the grid to draw the desired points or graphs.

Give the slope and y-intercept of the line whose equation is given below. Then graph the linear function.

$y = -5x + 6$

Use the graphing tool to graph the linear equation. Use the slope and y-intercept when drawing the line.

Click to enlarge graph

Click to enlarge graph

Click to enlarge graph

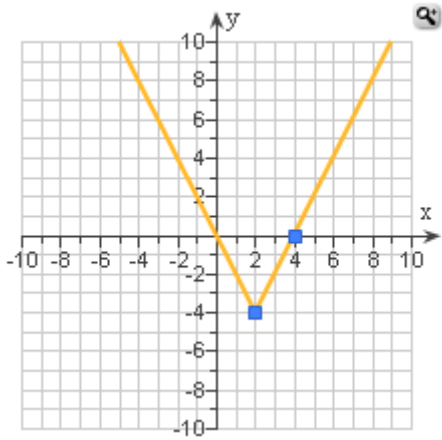
Tool palette

The table below shows you an example of each type of graph students can plot. For details and complete directions, refer to the [Graphing Tool pages](#) in the Student Help file, or click the question-mark icon in the tool palette:

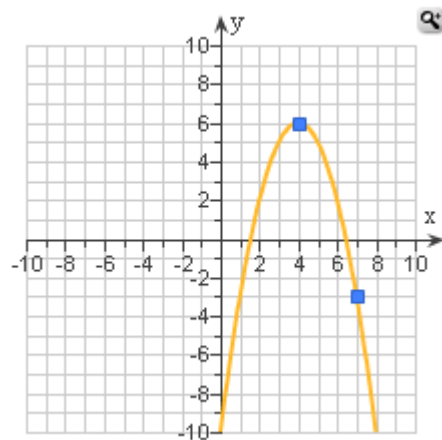
Point	Line

THE MYMATHLAB GRAPHING TOOL

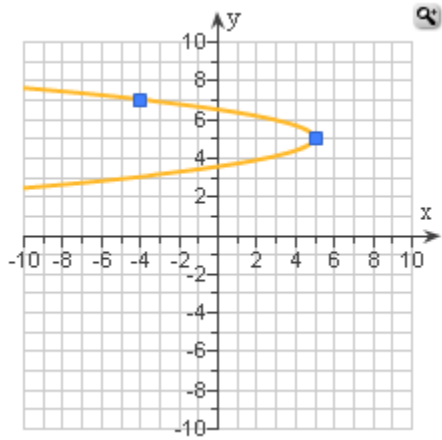
Absolute Value Function



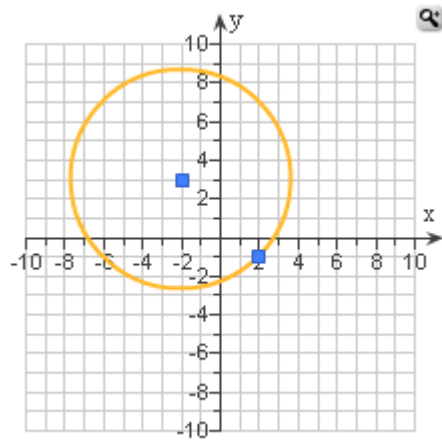
Vertical Parabola



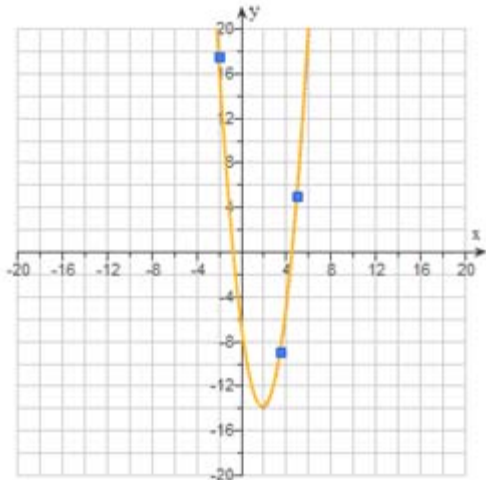
Horizontal Parabola



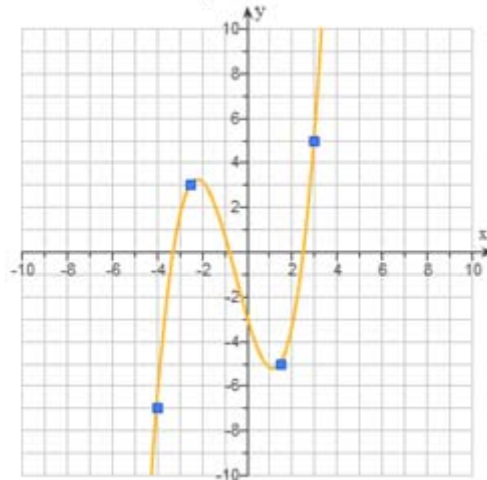
Circle



3-point Quadratic Function

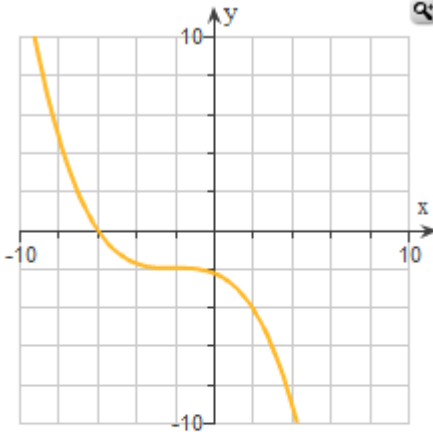


4-point Cubic Function



THE MYMATHLAB GRAPHING TOOL

Transformation Power Function



Vertical Stretch

Horizontal Stretch

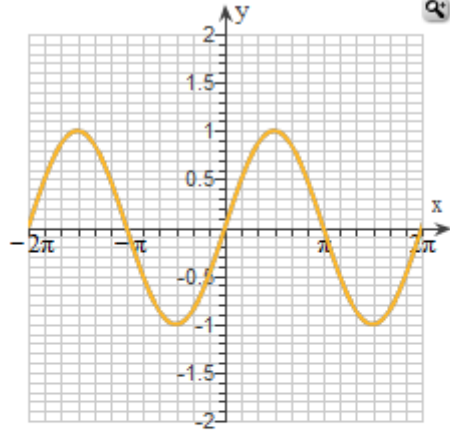
Vertical Shift

Horizontal Shift

Reflect over x...

Reflect over y...

Transformation Trigonometric Function



Amplitude

Period

Vertical Shift

Phase Shift