



Pearson

Welcome to the Mastering Gradebook

As students complete work in your course, Mastering automatically scores their work and collects other data about their responses. That data is available to you from the Mastering Gradebook. For courses paired with a Learning Management System (LMS), automatic grade sync may be available from the Mastering Gradebook to your LMS gradebook.

The Mastering Gradebook provides a **quick view** of scores, time spent, and difficulty of each *standard* * Mastering assignment for each student. Flexible **filters** let you limit your view to select groups of students or select categories of assignments, or both.

* A *standard* Mastering assignment is distinguished from these *specialized* assignments: Adaptive Follow-Ups, Dynamic Study Modules, Learning Catalytics, and Offline Activities.

For standard Mastering assignments, the Gradebook also gives you easy access to **valuable detailed data** for:

- A specific assignment (diagnostic graphs to view and sort data in useful ways)
- An individual student’s performance (exactly how the student interacted with the assignment, and how each student’s scores contributes to the student’s current total)
- Quantifiable and reportable learning outcomes to help you assess student understanding or skills (specific assignment items that support each outcome, percentage of students who completed the items, and scores for the outcome)

Align Mastering assignments with your syllabus

Even before the term begins, you can use the Gradebook to see all the assignments you have set dates for in Mastering’s course calendar.

To see the assigned points for each assignment or activity, and the total points for the term, as shown below, use course settings to display the Gradebook **by points**.

Gradebook [Gradebook Settings](#) [Learning Outcomes Summary](#)

Filter ▾ Showing Homework [Clear All Filters](#)

Score Time Difficulty

Enter student name or ID [View Legend](#)

Students per page: 25 ▾

NAME	Homework 2	Readin...ns	Introd...rs	Homework 4	Homework 5	Homework 6	Homework 7	TOTAL
Assigned Points	3.00	4.00	3.00	4.00	11.00	10.00	4.00	47
Class Average	3.0 <input type="text"/>	2.8 <input type="text"/>	0.0 <input type="text"/>	1.0 <input type="text"/>	1.8 <input type="text"/>	0.0 <input type="text"/>	0.0 <input type="text"/>	15.8

Using the Mastering Gradebook

Standard assignments and specialized assignments are represented by different colored column heads. For a quick reminder of the color codes for column heads, select **View Legend** above the **Total** column. **Offline Activities** are the same color as Standard Assignments. Any **Learning Catalytics** columns don't appear until the session ends.

[View Legend](#)

Assignment Type Legend

- Adaptive Follow-Up
- Dynamic Study Module
- Learning Catalytics Session
- Standard Assignment

TOTAL
380

See score, time-to-complete, and difficulty data at a glance

Once students have begun working on assignments, a wealth of data becomes available.

- On the **Score tab** you see all scores, the class average, and each student's current total. Optional shading alerts you to low scores and can indicate performance patterns that need attention.
- On the **Time tab**, deeper shades indicate less time spent on the assignment, and could flag inappropriate student collaboration.
- The **Difficulty tab** is a good place to identify students who are struggling with the material, where 5 is the most difficult. Difficulty ratings factor in the time spent, number of hints and answers requested, and the number of incorrect attempts before a correct answer is reached.

Gradebook Gradebook Settings Learning Outcomes Summary

Filter Showing Homework, Quiz, Test Clear All Filters

Score Time Difficulty

Students per page: 25

NAME	Intro..gy	Ch 2	Ch 3	Lab 2	Ch 4	Ch 5	Ch 6	Ch 7a	Ch 7b	Lab 4	Ch 8	Ch 9	TOTAL
Class Average	--	76.4	98.5	62.6	88.1	89.5	85.9	91.6	83.7	84.7	88.4		19.1
Last01, First0...	--	84.4	100	83.3	102	99.9	0.0	95.8	101	100	0.0		27.1
Last02, First0...	--	70.3	97.3	92.9	98.0	49.5	72.9	72.9	47.5	80.0	86.9		24.9
Last03, First0...	--	73.6	69.0	61.9	104	102	91.4	85.0	100	95.0	99.7		25.4
Last04, First0...	--	72.5	80.7	0.0	34.3	86.3	75.7	80.0	83.4	90.0	99.2		31.1

Gradebook Gradebook Settings Learning Outcomes Summary

Filter Showing Homework, Quiz, Test Clear All Filters

Score Time Difficulty

Students per page: 25

NAME	Intro..gy	Ch 2	Ch 3	Lab 2	Ch 4	Ch 5	Ch 6	Ch 7a	Ch 7b	Lab 4	Ch 8	Ch 9	TOTAL
Class Average	--	14m	12m	19m	19m	18m	26m	9m	23m	6m	18m		
Last01, First0...		17m	12m	26m	21m	17m	16m	7m	9m	22m	8m	--	5h51m
Last02, First0...		11m	9m	20m	13m	26m	29m	28m	5m	14m	11m	26m	7h48m
Last03, First0...		17m	9m	14m	15m	9m	10m	14m	4m	24m	2m	9m	5h38m

Gradebook Gradebook Settings Learning Outcomes Summary

Filter Showing Homework, Quiz, Test Clear All Filters

Score Time Difficulty

Students per page: 25

NAME	Intro..gy	Ch 2	Ch 3	Lab 2	Ch 4	Ch 5	Ch 6	Ch 7a	Ch 7b	Lab 4	Ch 8	Ch 9	AVERAGE
Class Average	--	1	2	1	3	1	1	1	1	1	1	1	
Last01, First0...		1	1	3	1	2	1	1	1	1	1	--	1
Last02, First0...		4	2	3	1	3	1	2	2	1	1	1	3
Last03, First0...		2	2	5	1	1	1	1	2	1	1	1	1
Last04, First0...		2	1	5	--	5	2	2	2	1	1	1	3
Last05, First0...		2	1	1	1	3	1	1	2	3	1	1	2
Last07, First0...		2	1	4	1	2	1	1	1	2	1	2	2
Last08, First0...		1	1	1	1	2	1	1	1	1	1	1	1
Last09, First0...		1	2	1	1	1	1	1	2	2	1	1	1
Last10, First1...		3	1	1	1	1	1	1	1	1	1	1	1
Last11, First1...		1	1	1	1	1	1	1	1	1	1	1	1

Point or select for more information from any tab

- Assignment titles are condensed into column heads along the top. (You cannot resize these columns.) Instead, **point** to each assignment *column head* to see the full title of the assignment and other details.

For a standard assignment, **select** the *column head* to see diagnostic charts for the assignment. See “Use Mastering diagnostic charts” on page 5 for details.

The screenshot shows a table with columns: NAME, Introd..rs, Chapte..iz, Chapte..iz, and New Yo..es. The 'Essays' row has a score of 3. A tooltip for 'Ch 2 Quiz' is visible, showing 'Category: Quiz', 'Due November 30, 2016', and '5.00 points'. Below the table, student scores are shown: Davis, Bryce (0.0), Fernandez, Jas... (2.8), and another student (0.0).

- **Select** a *student's name* to see details of all the student's grades on the Scores page.
- **Select** a *student's assignment score, time, or difficulty* to open the Assignment Grade page, which shows the score for each item in the assignment. Select an item score to drill down to see the student's step-by-step work for that item.
- **Point** to *any score, time, or difficulty* to see the full name of the assignment.

The screenshot shows a table with columns: NAME, Introd..rs, Chapte..iz, Chapte..iz, and New Yo..es. The 'Essays' row has a score of 3. A tooltip for 'Chapter 25: Hormones' is visible, showing 'Category: Quiz', 'Due November 30, 2016', and '5.00 points'. Below the table, student scores are shown: Davis, Bryce (0.0), Fernandez, Jas... (2.8), and another student (0.0).

Good to know: You can adjust student scores at any time, whether for individual students or the entire class. Students can see all their scores by selecting **Scores**. You can control (in assignment settings) whether students can see their individual assignment scores, and (in course settings) whether they can see their total score for the Mastering course.

Sort rows

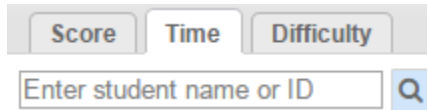
Select the column head for **Name**, **Student ID**, **Login Name**, **Average**, or **Total** to sort the Gradebook by that column.

You can't sort the Gradebook by the scores in any *assignment* column, but for standard assignments Mastering's diagnostic charts provide that capability, and much more. See “Use Mastering diagnostic charts” on page 5 for details.

For Dynamic Study Modules, you can generate Dynamic Study Module reports, and for Learning Catalytics sessions, you can download the Learning Catalytics Gradebook to a .csv file and sort rows by any column when you open the .csv in a sheet application.

Filter to focus on data by student, group, or assignment

To see data for a specific student on any tab (Score, Time, Difficulty), enter a full or partial **student name or ID**.

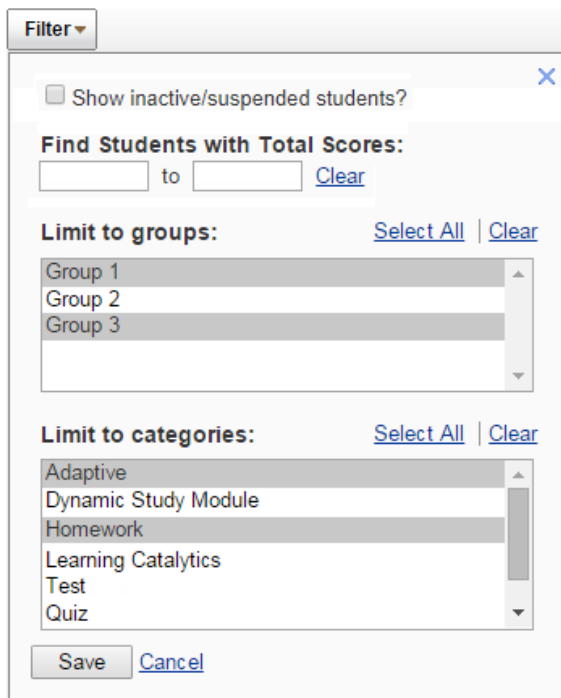


Score Time Difficulty

Enter student name or ID

To see a particular set of Gradebook data, select **Filter** and make selections to show:

- **Inactive**/suspended students
- Students whose current total score falls within a **range of scores**
- One or more selected **groups** of students (when groups are available in the course)
- One or more selected **categories** of assignments



Filter

Show inactive/suspended students?

Find Students with Total Scores:
 to

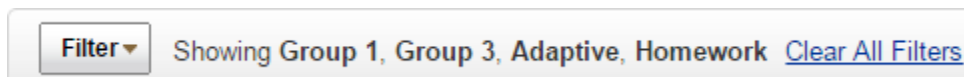
Limit to groups: |

Group 1
Group 2
Group 3

Limit to categories: |

Adaptive
Dynamic Study Module
Homework
Learning Catalytics
Test
Quiz

To restore all data after a filter has been applied, select **Clear All Filters**.



Filter Showing Group 1, Group 3, Adaptive, Homework

Good to know: You create your own **groups** in the course, and you can assign each student to multiple groups to help you analyze Gradebook data. For example, you could create a group for each section of the course, and see scores for each section separately.

- You could also identify a group of students who have attended extra-help sessions, and see all their scores at once to see whether their performance is improving.
- Instructors have also found it useful to create a group for students whose scores show a uniform pattern of spikes and troughs, which might indicate answer sharing.

Control page length for easier navigation

You can scroll through your entire list of students on a single page, or you can display fewer students at once on a series of pages by selecting a number from the **Students per page** list.



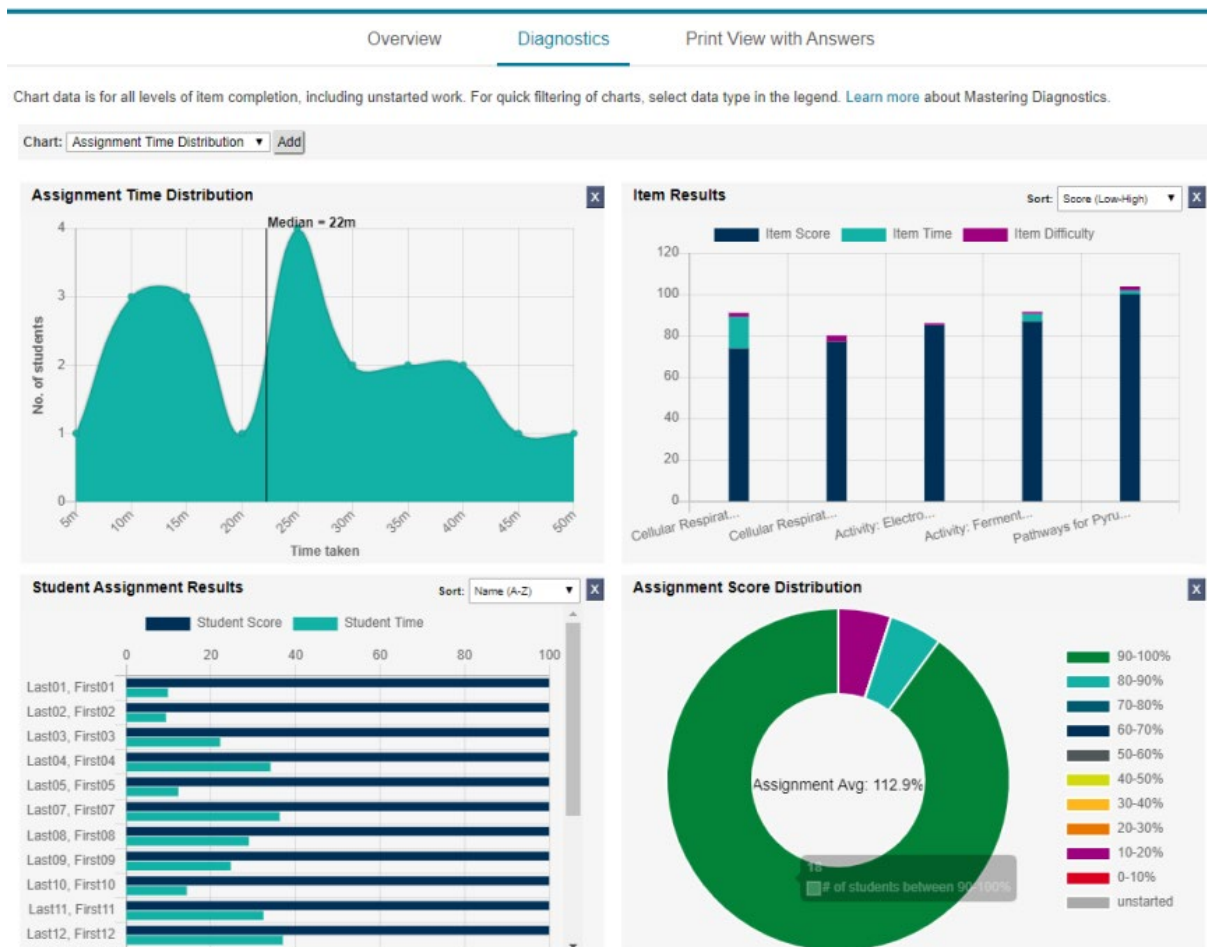
When you display student names on more than one page, you can move quickly to a specific page by selecting the page number. To see the range of last names listed on a page, pause as you point to the page number before you select.



Use Mastering diagnostic charts for comparative information

When you select a column head (assignment title) for a standard assignment in the Gradebook, diagnostics charts appear with score, time, and difficulty data for that assignment.

Four charts are shown the first time you open this page, but you can hide or show the charts you want. You can also sort chart data and filter out some kinds of data.



View and export learning outcomes to track student learning

Another way of assessing student understanding is to examine learning outcomes that are demonstrated by correct answers to items in standard assignments. For many textbooks, a list of learning outcomes is provided, with specific outcomes associated with specific items. You can also add your own learning outcomes and associate them with items.

To measure the outcomes you want your students to achieve, assign items that demonstrate the desired understanding. To assess those outcomes, select **Learning Outcomes Summary** from the Gradebook.

Learning Outcomes Summary

The list below contains learning outcomes specified for items assigned in this course. The initial order reflects the sequence of outcomes as they appear in assignments, but you can sort them by any column. [Learn more about using learning outcomes.](#)

Hide Provided Learning Outcomes [Print](#) [Export](#)

#	LEARNING OUTCOMES	# OF ITEMS	% COMPLETE	% AVERAGE SCORE																															
1	Describe...	7	69.9	90.9																															
	<table border="1"> <thead> <tr> <th>ASSIGNMENTS</th> <th>ITEMS</th> <th>% COMPLETE</th> <th>% AVERAGE SCORE</th> </tr> </thead> <tbody> <tr> <td>Ch 2</td> <td>The Anatomy of Atoms</td> <td>100</td> <td>103</td> </tr> <tr> <td>Ch 2</td> <td>Activity: Structure of the Atomic Nucleus</td> <td>100</td> <td>94.4</td> </tr> <tr> <td>Ch 2</td> <td>Self-Quiz 2.8</td> <td>100</td> <td>80.3</td> </tr> <tr> <td>Ch 2</td> <td>Multiple Choice 1.34</td> <td>0.0</td> <td>--</td> </tr> <tr> <td>Ch 2</td> <td>Multiple Choice 1.39</td> <td>0.0</td> <td>--</td> </tr> <tr> <td>Ch 7a</td> <td>Activity: Membrane Structure</td> <td>100</td> <td>95.2</td> </tr> <tr> <td>Evolution</td> <td>Evidence for Evolution</td> <td>89.5</td> <td>81.4</td> </tr> </tbody> </table>	ASSIGNMENTS	ITEMS	% COMPLETE	% AVERAGE SCORE	Ch 2	The Anatomy of Atoms	100	103	Ch 2	Activity: Structure of the Atomic Nucleus	100	94.4	Ch 2	Self-Quiz 2.8	100	80.3	Ch 2	Multiple Choice 1.34	0.0	--	Ch 2	Multiple Choice 1.39	0.0	--	Ch 7a	Activity: Membrane Structure	100	95.2	Evolution	Evidence for Evolution	89.5	81.4		
ASSIGNMENTS	ITEMS	% COMPLETE	% AVERAGE SCORE																																
Ch 2	The Anatomy of Atoms	100	103																																
Ch 2	Activity: Structure of the Atomic Nucleus	100	94.4																																
Ch 2	Self-Quiz 2.8	100	80.3																																
Ch 2	Multiple Choice 1.34	0.0	--																																
Ch 2	Multiple Choice 1.39	0.0	--																																
Ch 7a	Activity: Membrane Structure	100	95.2																																
Evolution	Evidence for Evolution	89.5	81.4																																
2	Explain...	9	77.8	85.4																															
3	Understand...	5	80.0	92.5																															
4	Write....	1	100	75.0																															

The Learning Outcomes Summary lists every outcome that your course's standard assignments measure, which assignment items measure each outcome, what percentage of students have completed the items so far, and how well the students have done. From here you can print the outcome data or export it to a .csv file.

Generate Dynamic Study Module reports

From the Mastering Gradebook you can also select **Dynamic Study Modules** to view reports about student activity and performance in the modules available for your course. (Not all courses include Dynamic Study Modules.)

Download the Learning Catalytics Gradebook

If you have delivered Learning Catalytics sessions and transferred scores to your Mastering Gradebook, you can select the column head for a session to open Learning Catalytics. From there you can download the Learning Catalytics Gradebook to a .csv file. When you open that file in a sheet application, you can manipulate the rows and columns to examine scores.

Include non-Mastering activities in the Mastering Gradebook

You can keep track of all course activities in the Mastering Gradebook, including offline activities, such as hands-on labs or class participation. Simply create an offline activity and record grades in the area provided. You can also associate these activities with any non-reserved category. (Reserved categories are Adaptive, Dynamic Study Module, and Learning Catalytics.)

Create Offline Activity

Activity title:
Witch's Brew lab

Description:
Instructions posted in Announcements: Watch the video in the Course Materials area, and then select and create one of the "brews" demonstrated in the video. Download and complete the lab report from Course Materials, and bring it to class. Be prepared to discuss your results.

Category:
Homework

Assigned points:
3

Due date:
11/02/12 at 06:29pm

Score visible to students:
 After score has been recorded
 After score has been recorded and due date has passed
 Never

Edit Scores for Offline Activity: Witch's Brew lab

NAME	SCORE	EXEMPT
Adams, Henry	2.5	<input type="checkbox"/>
Alvarez, Juanita	2.0	<input type="checkbox"/>
Ashkah, Ana	3.0	<input type="checkbox"/>

Export Gradebook data

You can export *all* Gradebook scores (for standard Mastering assignments, specialized assignments, and offline activities) and times and difficulty for standard Mastering assignments to .csv files. When you export scores, select a format you can easily import into another gradebook. More details are discussed in Mastering Instructor Help.

You should also export grades at the end of the term for your own records. Your course remains available to you (but not to students) for a period after the term ends, but some courses do expire, which means you no longer have access. (You are always warned well in advance if a course is approaching its expiration date.)

For more information about anything in this document, see Mastering Instructor Help.